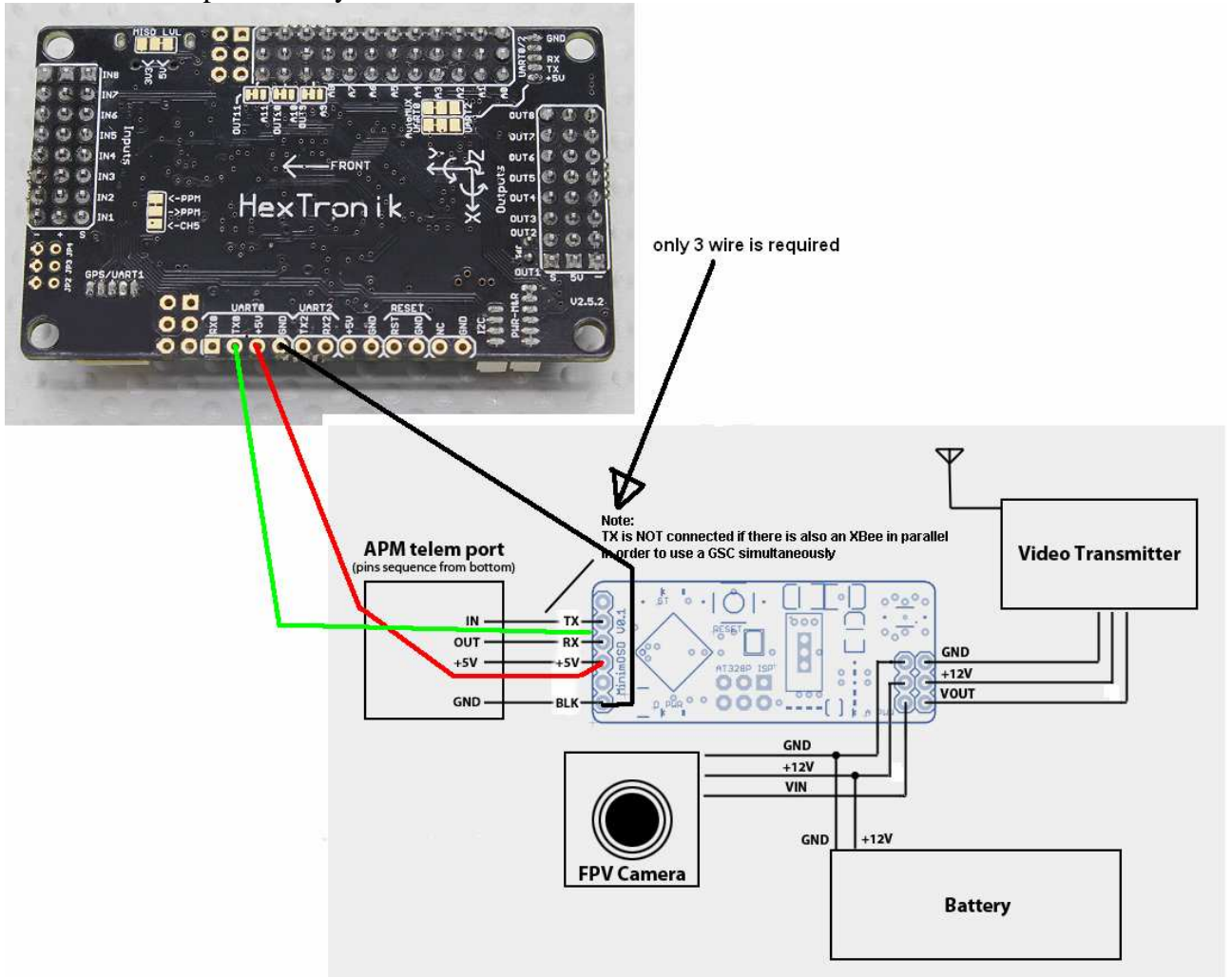


Someone have a big problem, no overlay with minim osd device or is impossible upgrade the firmware ,the cause of this problem are a lot,
But the solution are one.

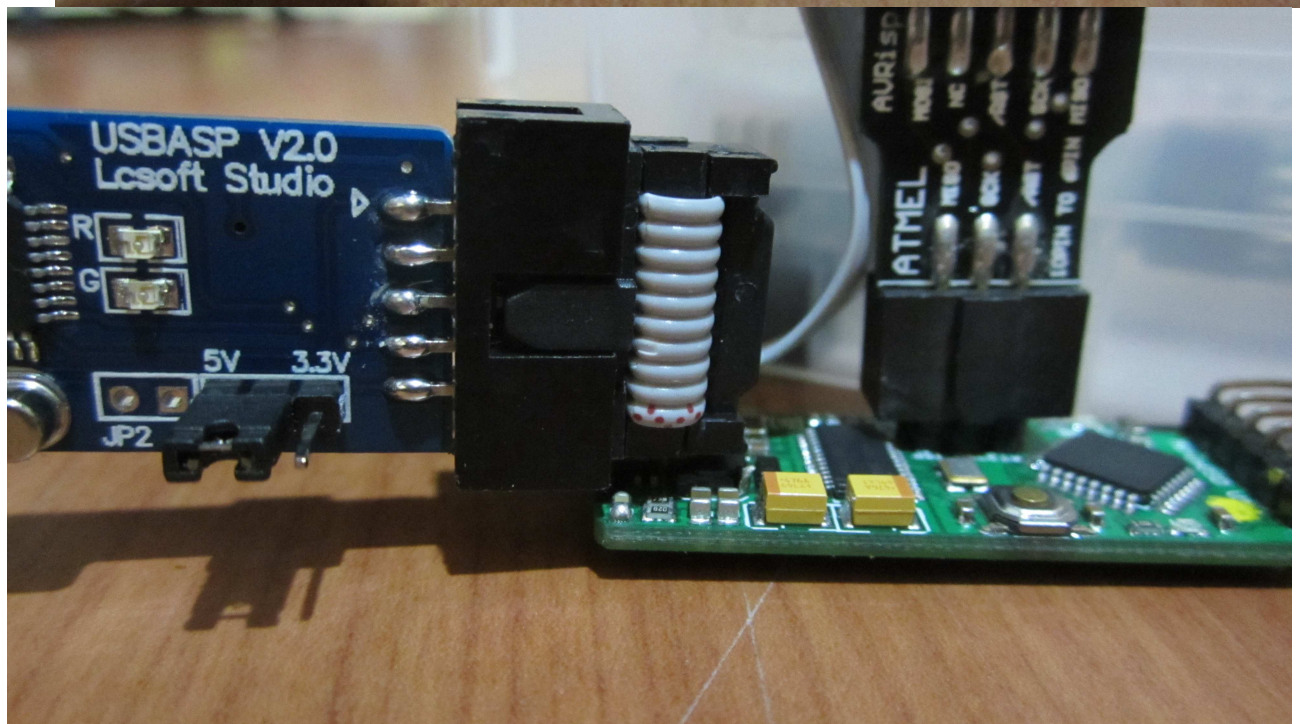
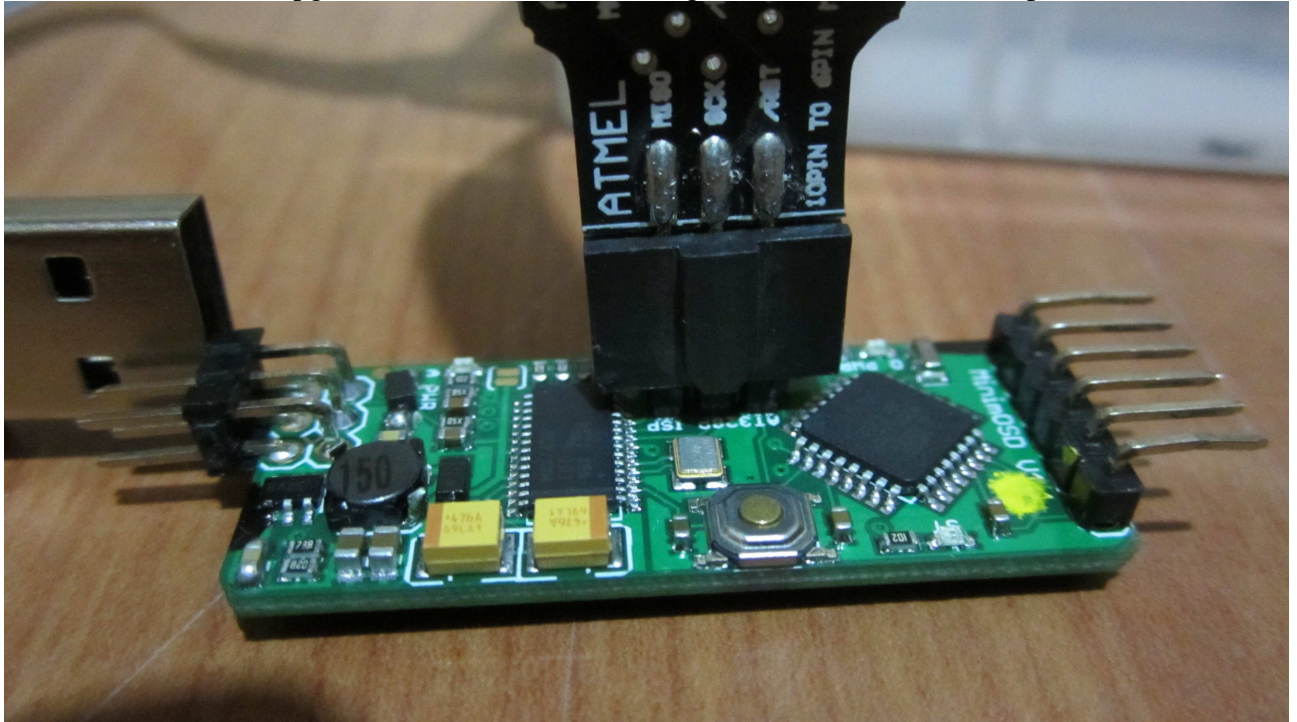
Follow this step ,end probably you will find the solution.

- 1) connect on the apm 2.5 only the minim osd



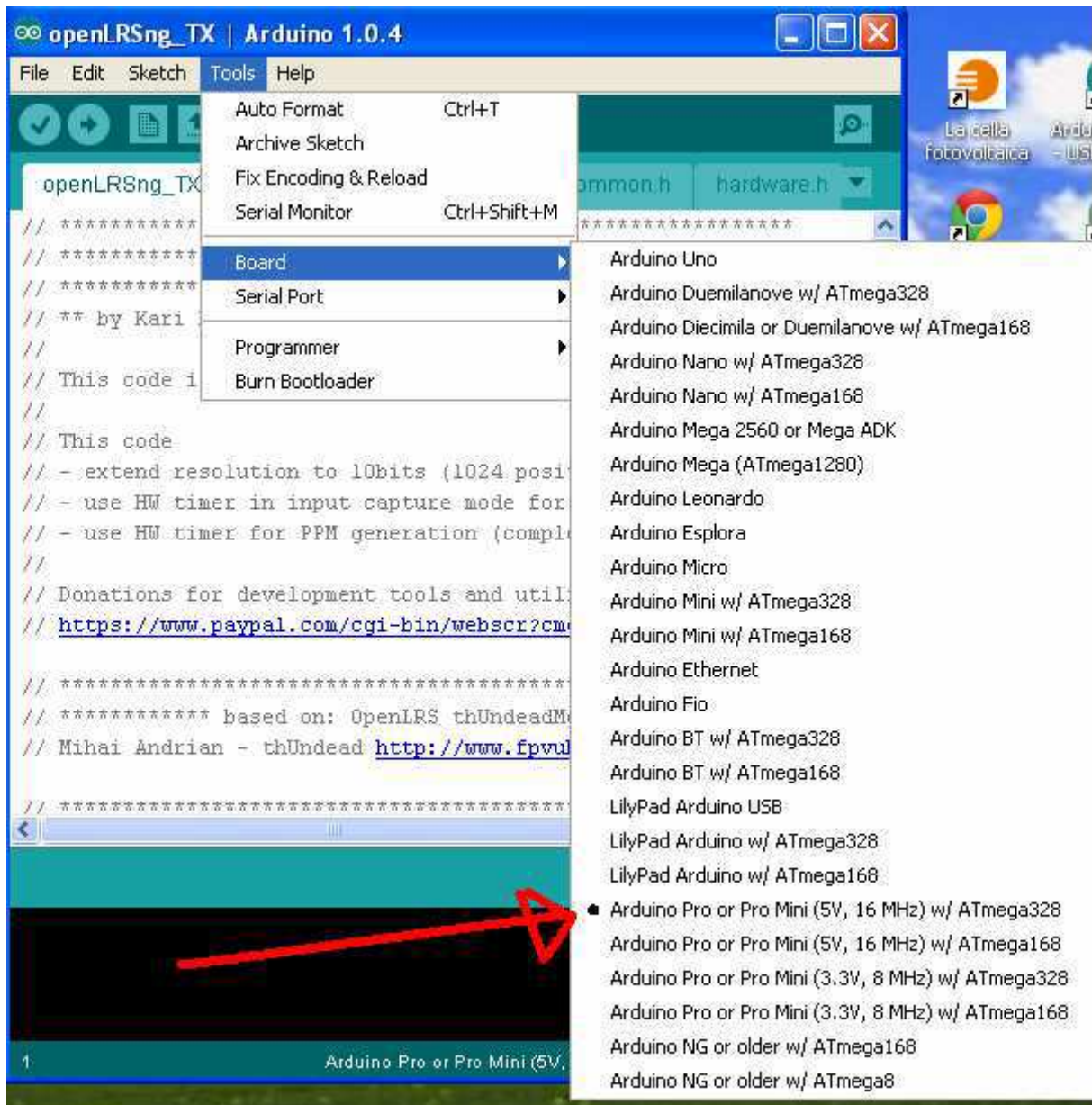
this is the right way ,the 4^o wire is not necessary because the nimin osd need only listen the apm board

2) if it not work we can upgrade the firmware connecting the minim osd to a usbasp

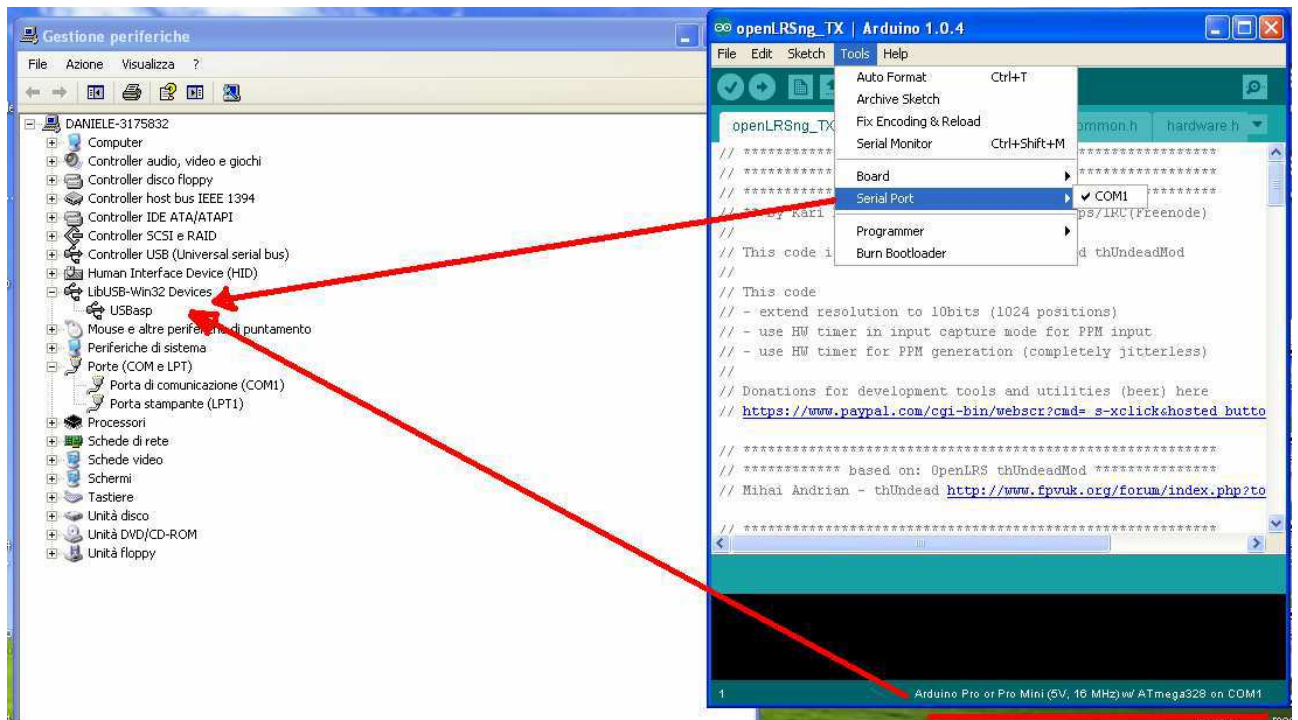


start the configurator , and the work is done but we can have a problem at this time the minim osd configurator is unable to upload the board , so we need to follow this step

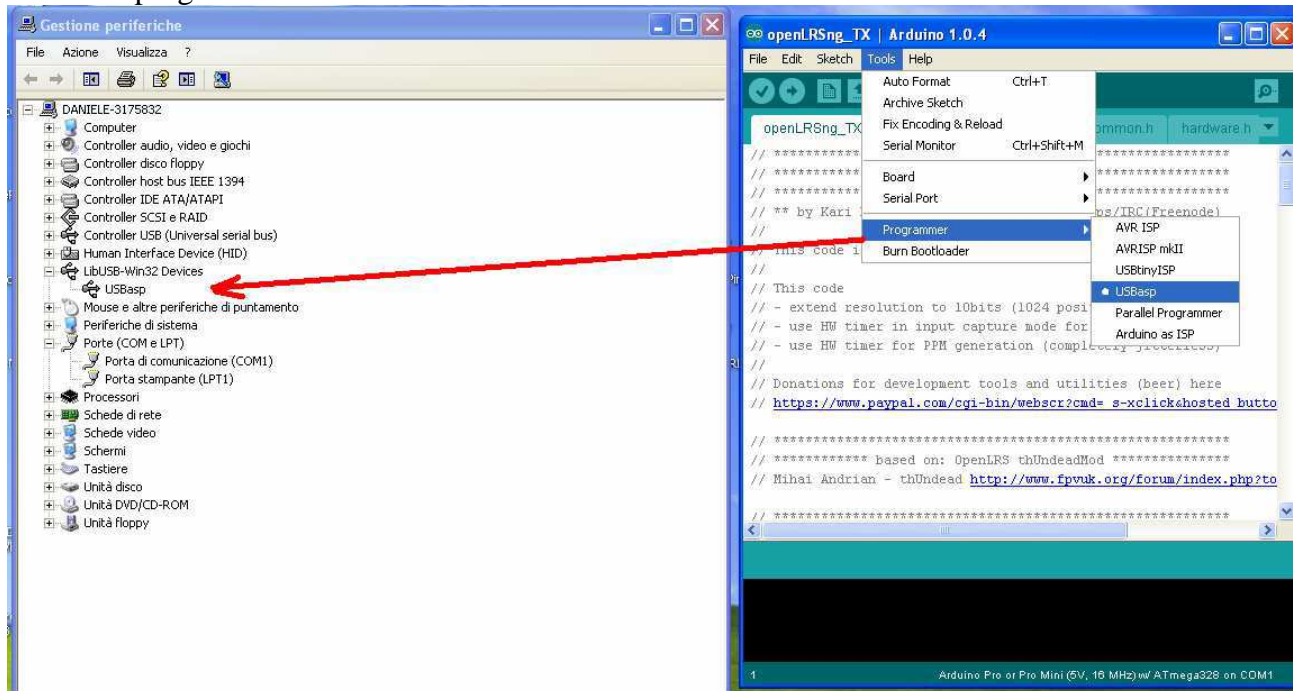
- 3) reflash the boot loader on the board, connect the board to your pc via usbasp as show in the photo up start the arduino ide
- 4) select the board as shown in the photo below



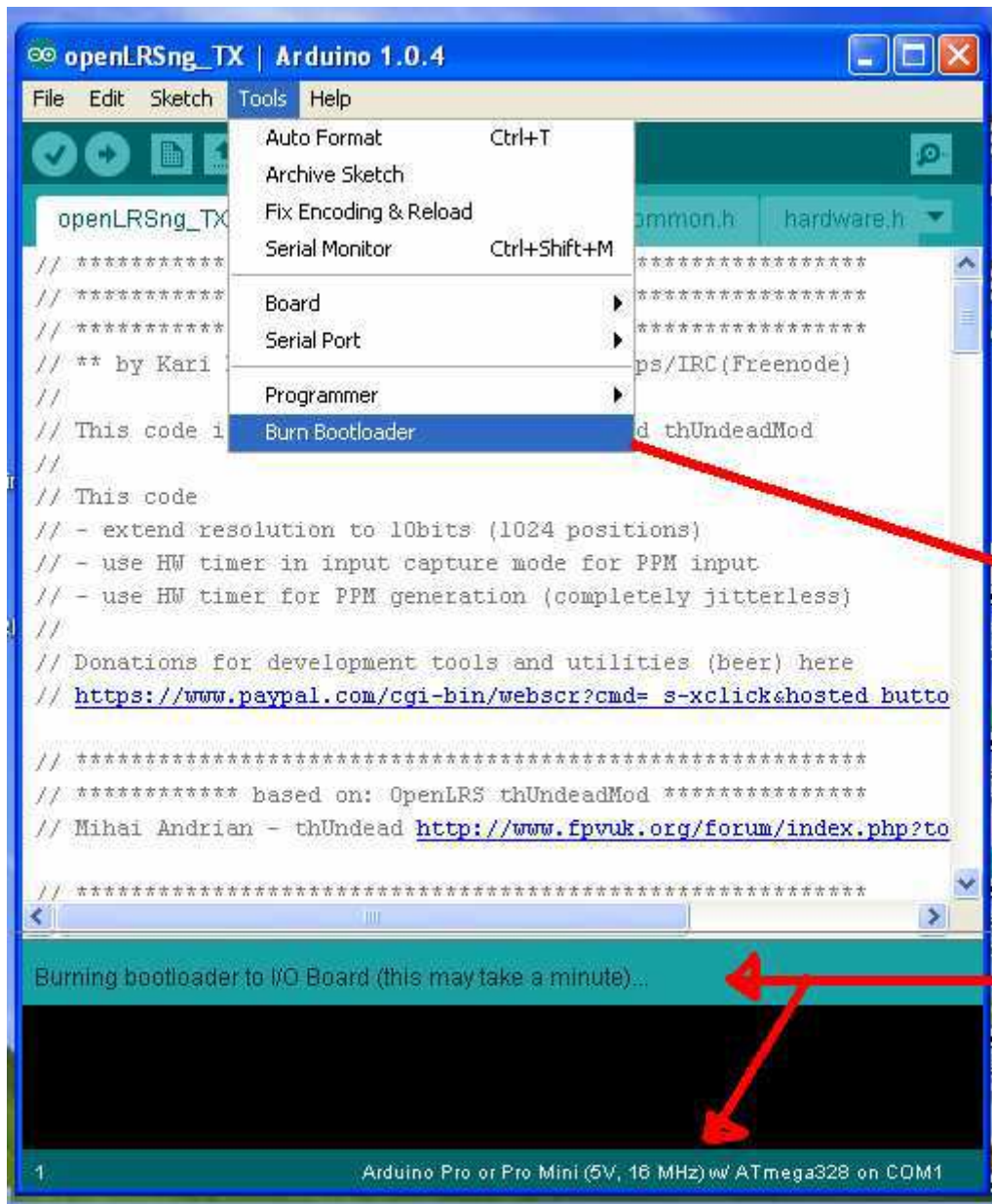
now select the serial port
 check in start-control pannel-service-hardware- the usbasp device , the com post is opened
 automatically select



select the programmer

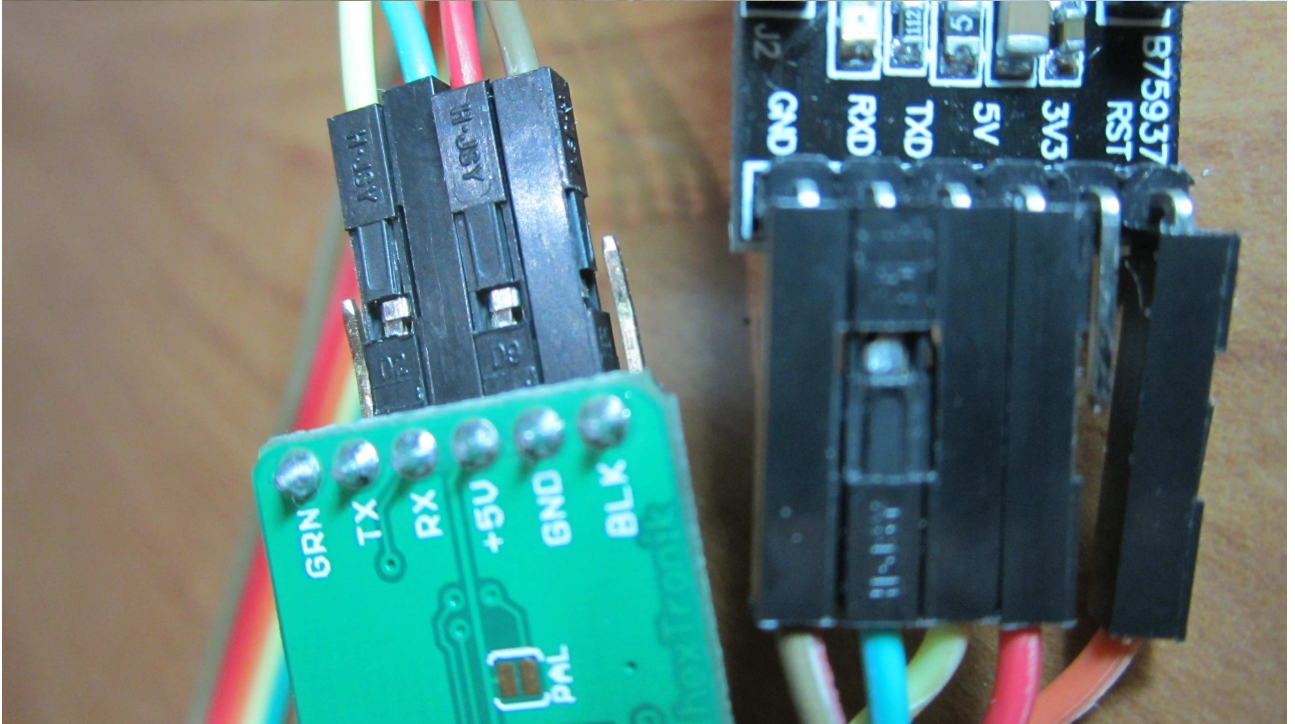
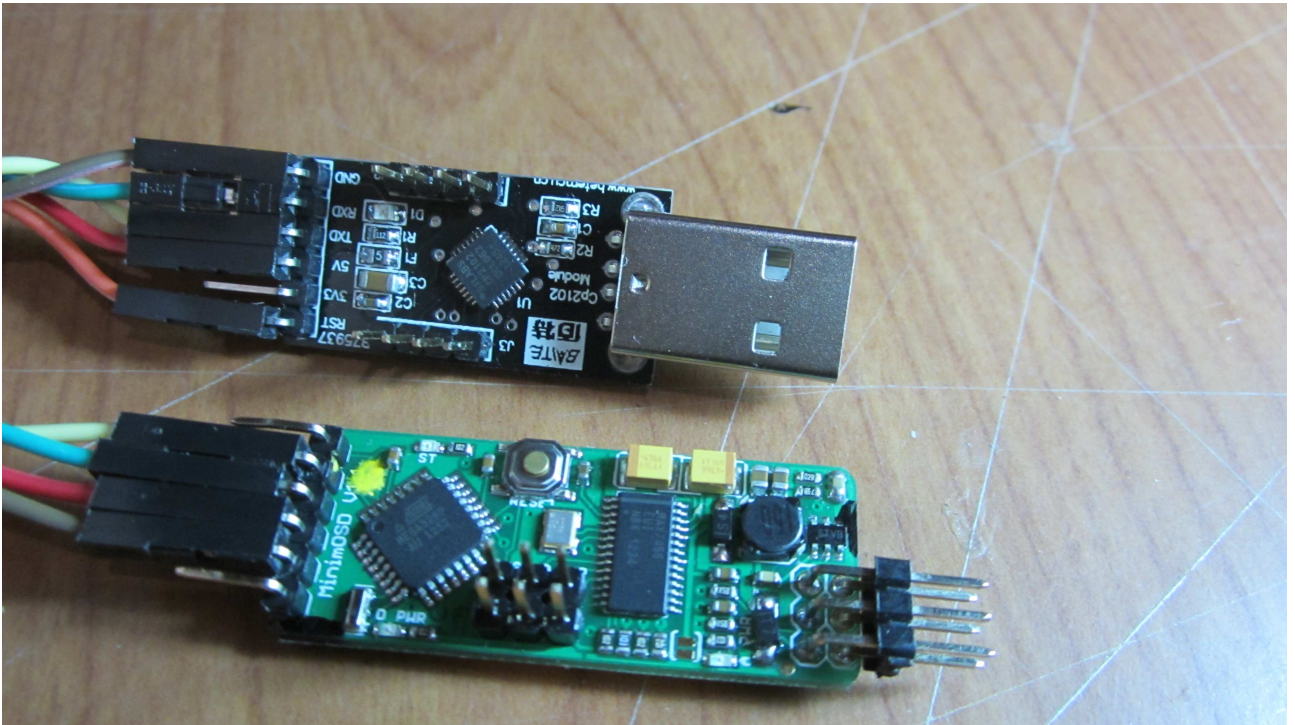


now we are ready to burn the boot loader

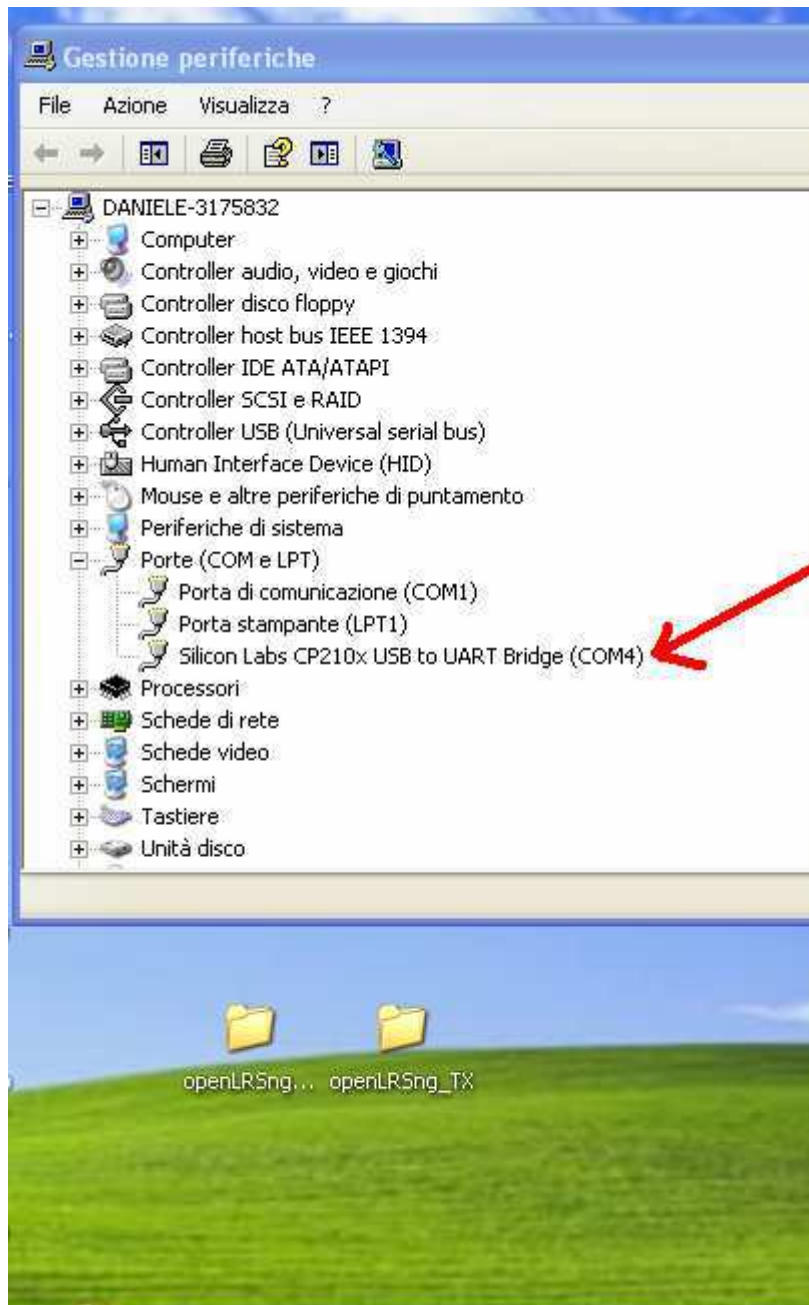


upload the bootloader and at the end disconnect the usbasp device
you may see some kind of error but they are not important

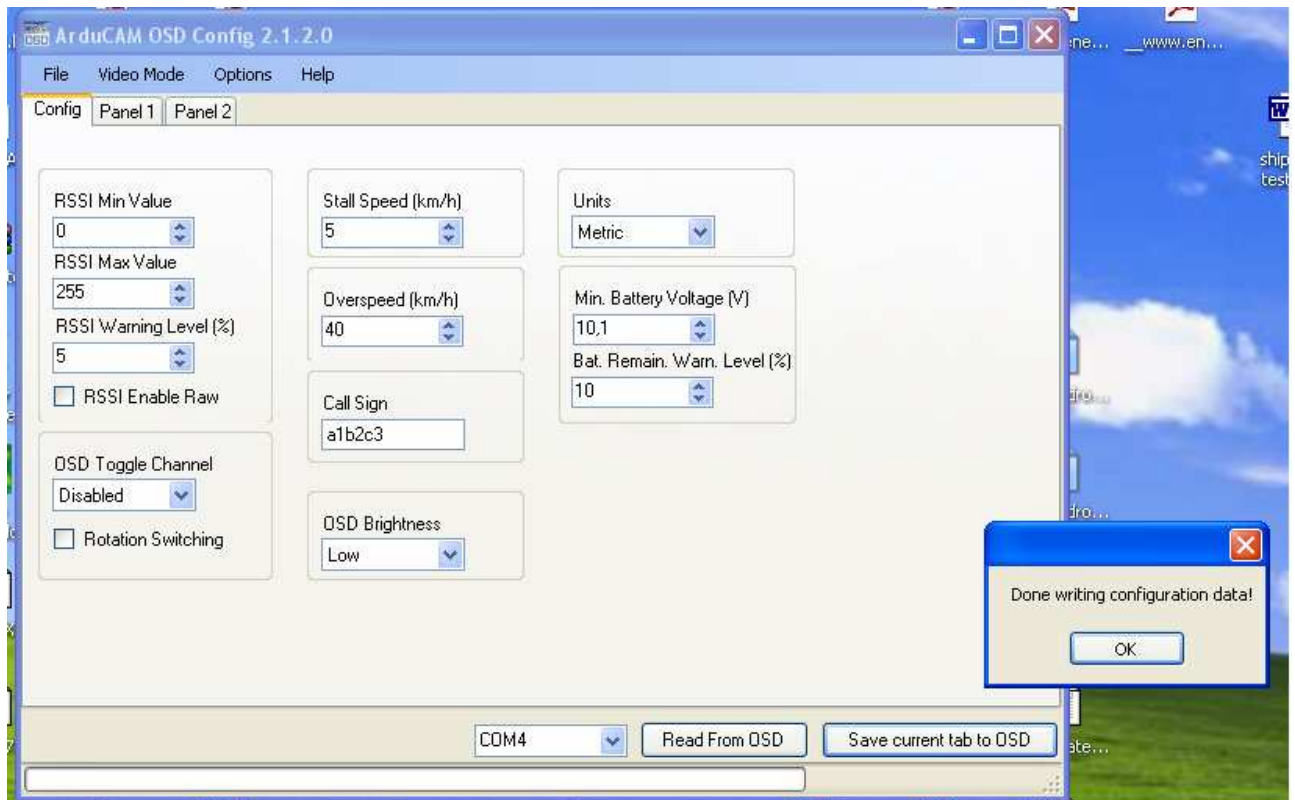
now you need a avr isp
programmer



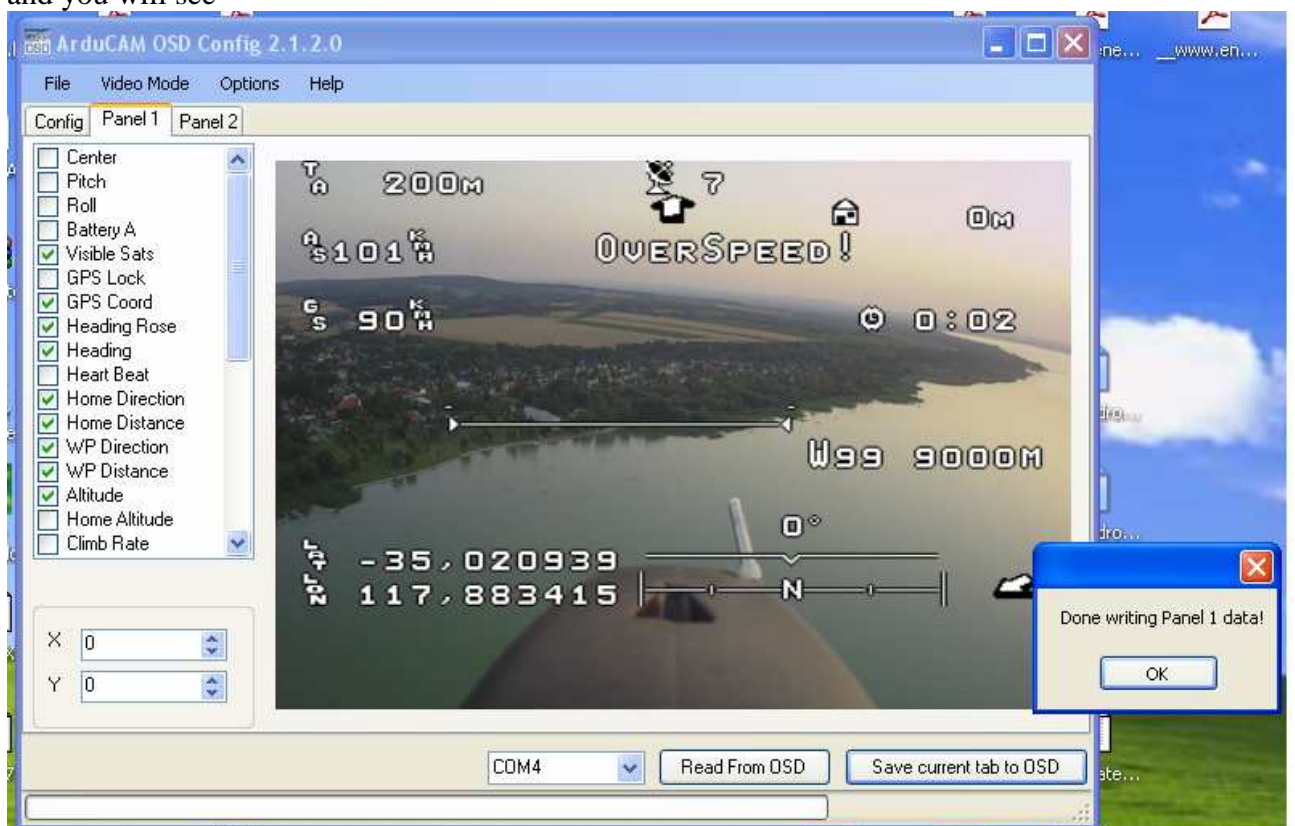
connect the device as shown in the picture
find the serial port on
start-control pannel-service-hardware- the avr isp device



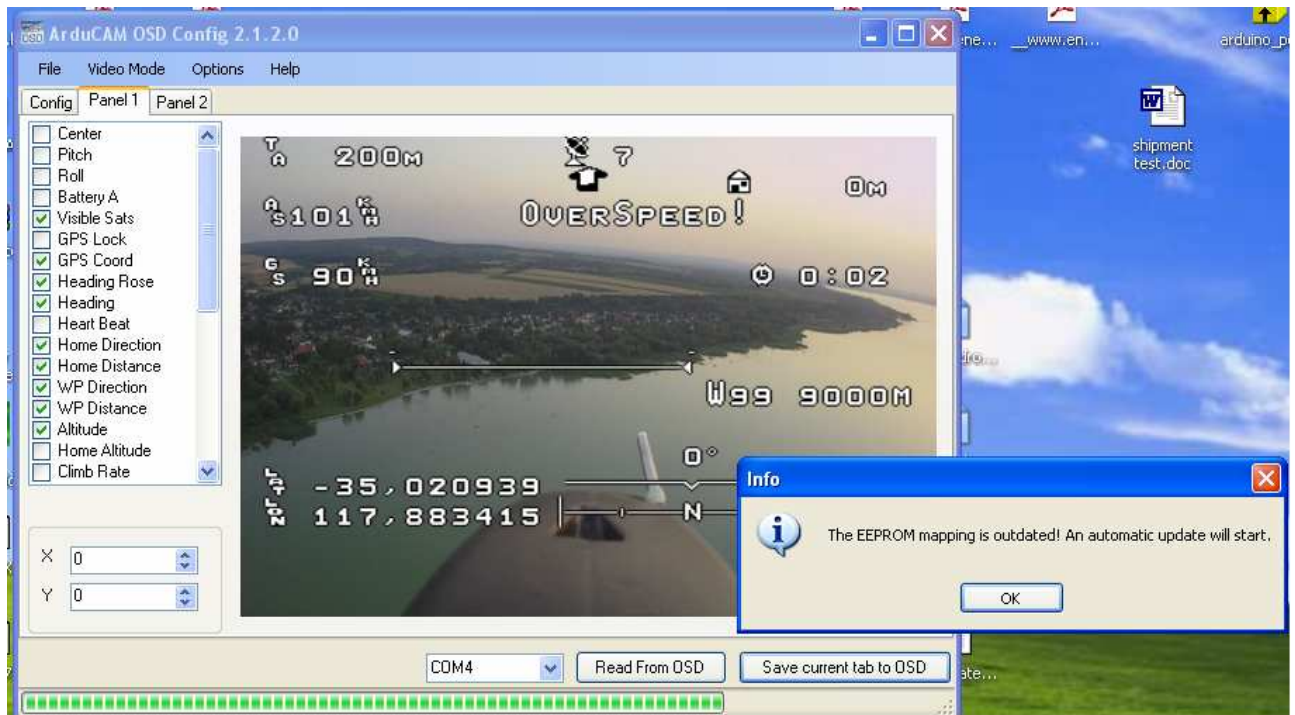
start the minim osd configurator
select on the window the serial port
on the page selected below set osd toggle channel on disable
then click save current tab toosd



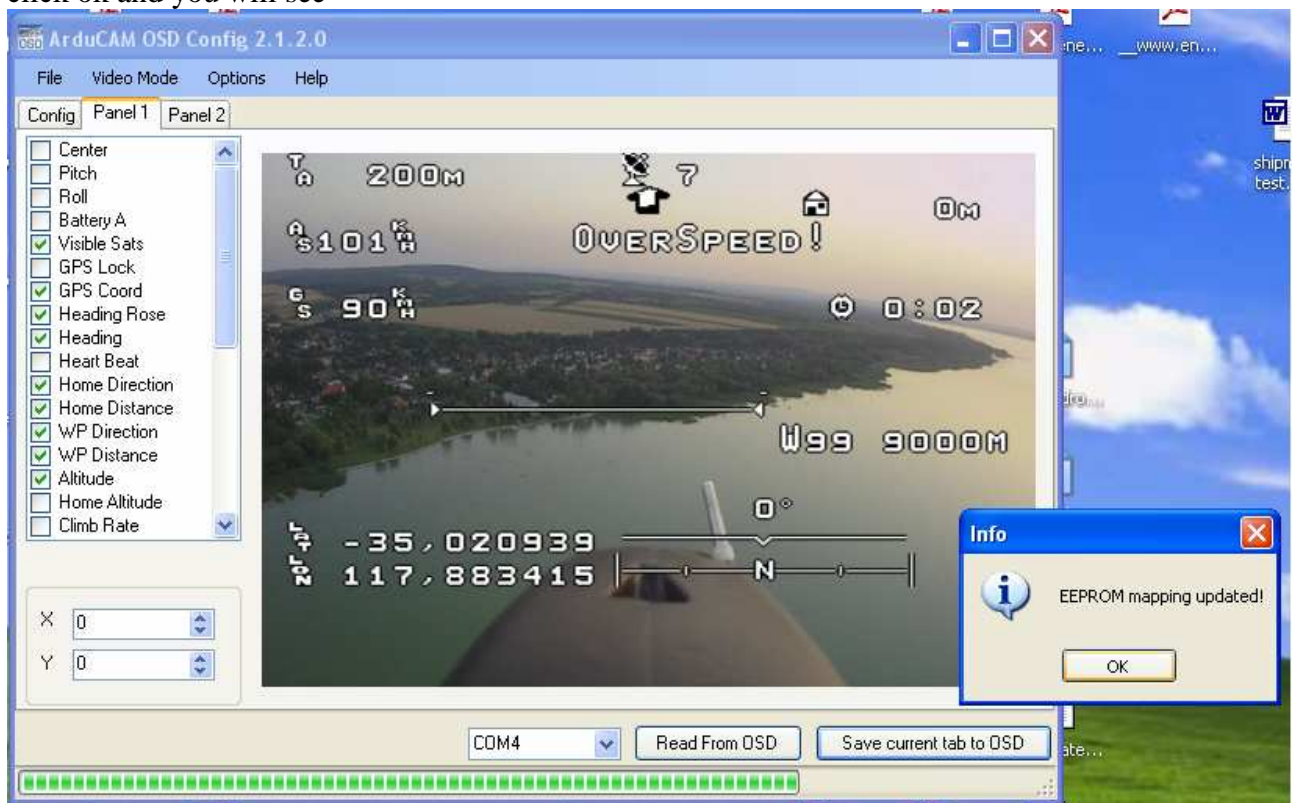
now configure your display as you want
 click again save current tab to osd
 and you will see



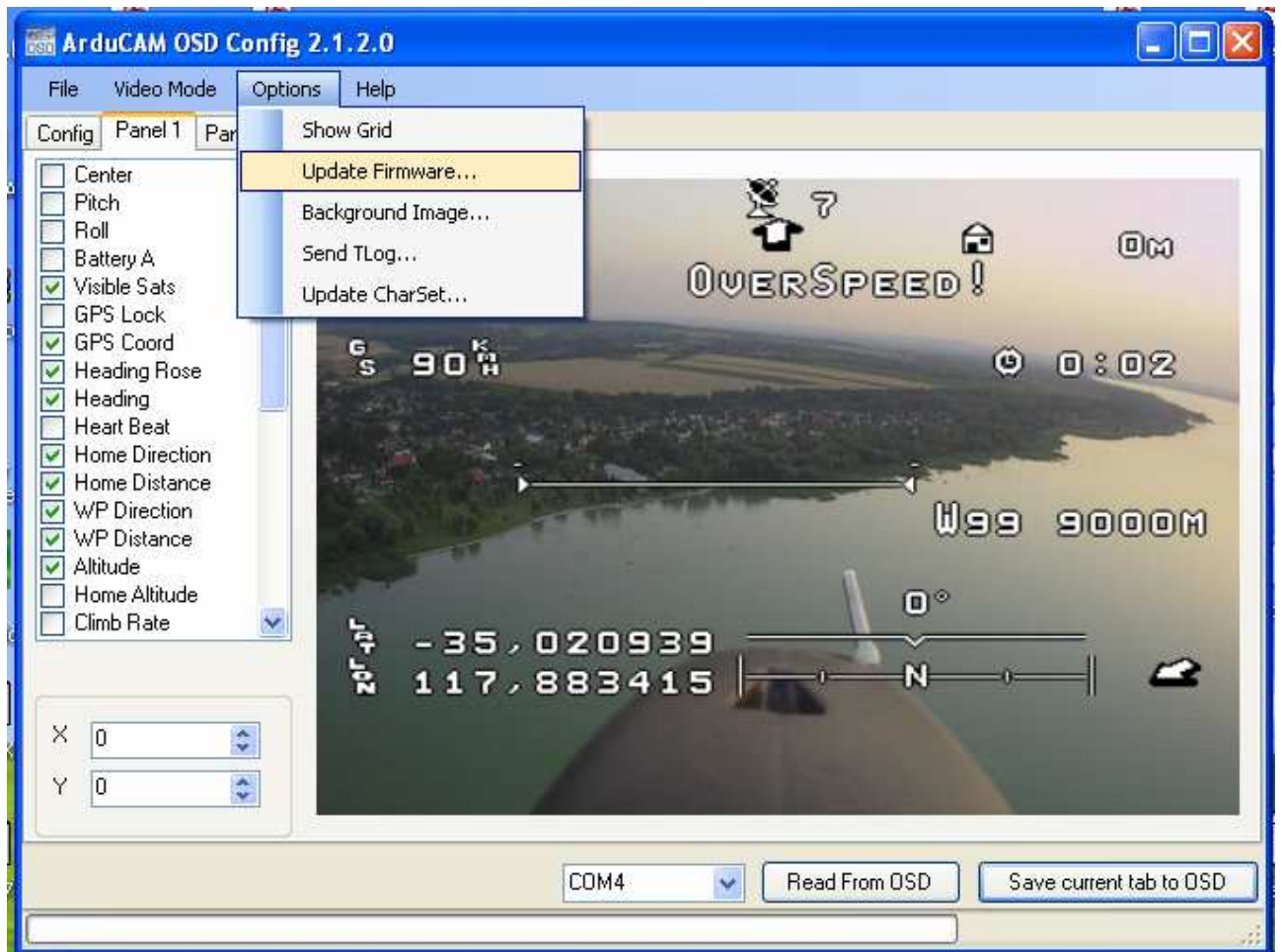
if the configurator show this message



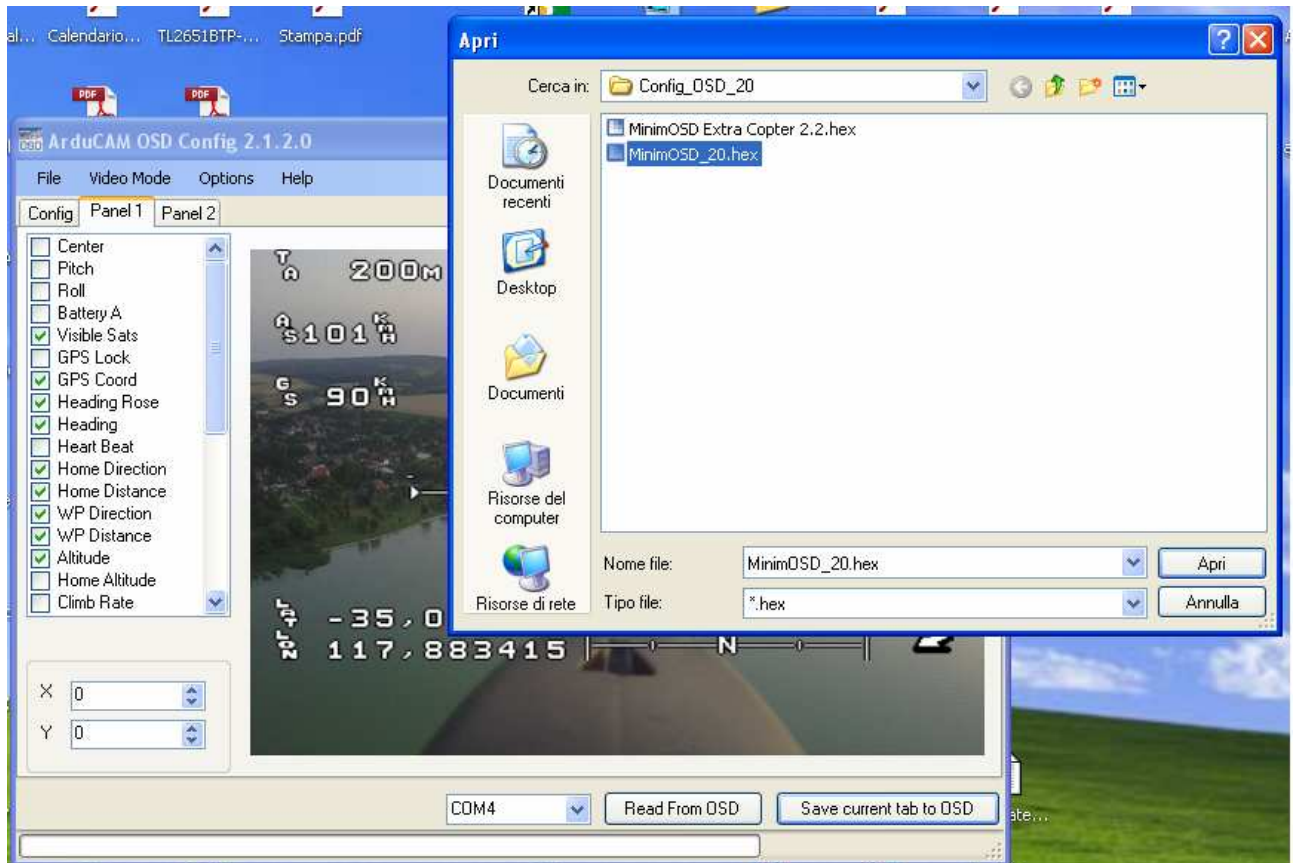
click ok and you will see



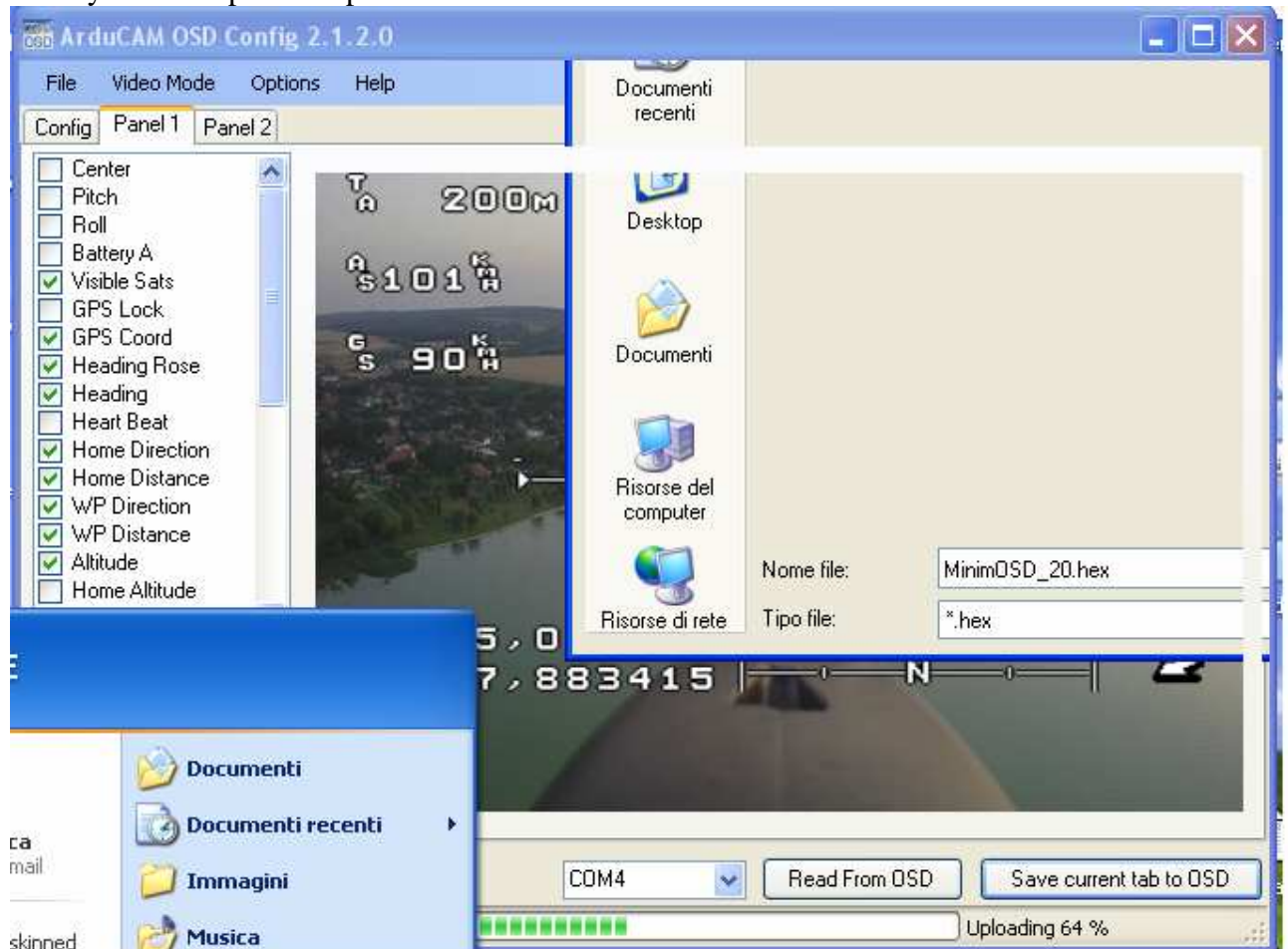
now we can update the firmware



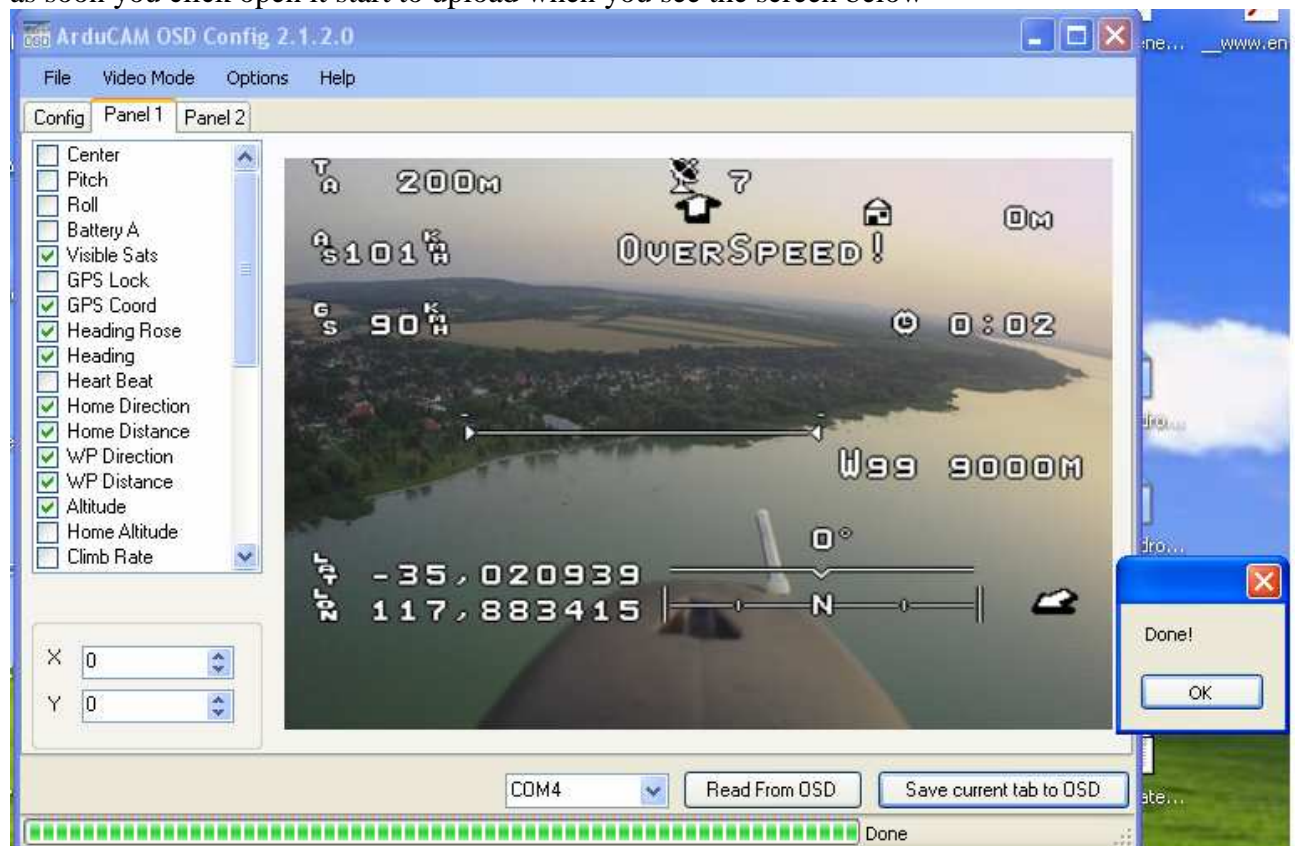
select the firmware



when you click open the upload will start



as soon you click open it start to upload when you see the screen below



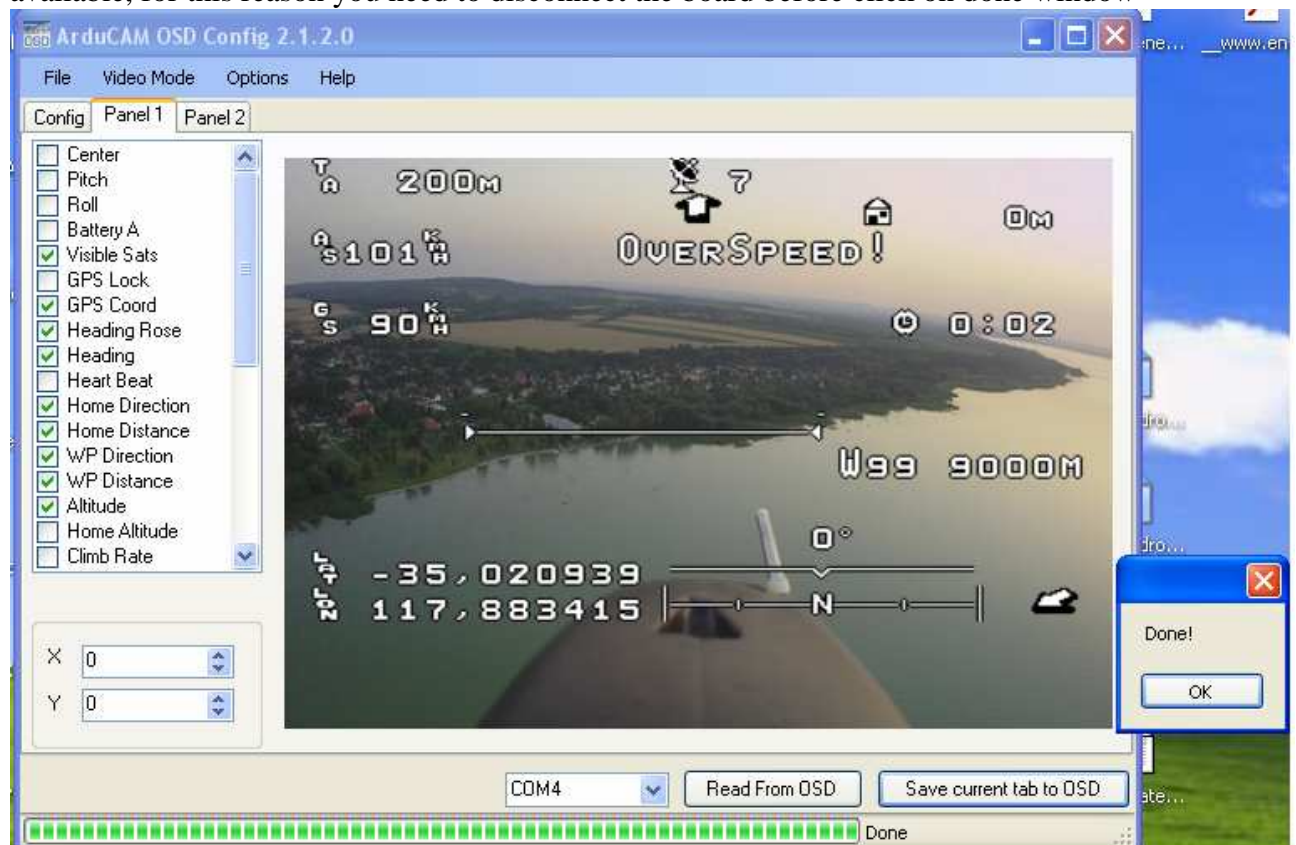
disconnect the board but don't click ok .

connect the osd to the apm board end it will work, if will make a change in the osd is necessary repeat from the step 2

QUESTIONS

Way you upload the screen configuration first and upgrade the firmware after?

Because the configuration is stored in another side of the board ,and it need the boot loader, for the saving ,after that you had uploaded the firmware "I don't know way"the boot loader is not available, for this reason you need to disconnect the board before click on done window



if you click done with the board connected it will update the eeprom but with an error ,so the board don't work.

If you have any questions or any suggest please email me

P66charly@tiscali.it